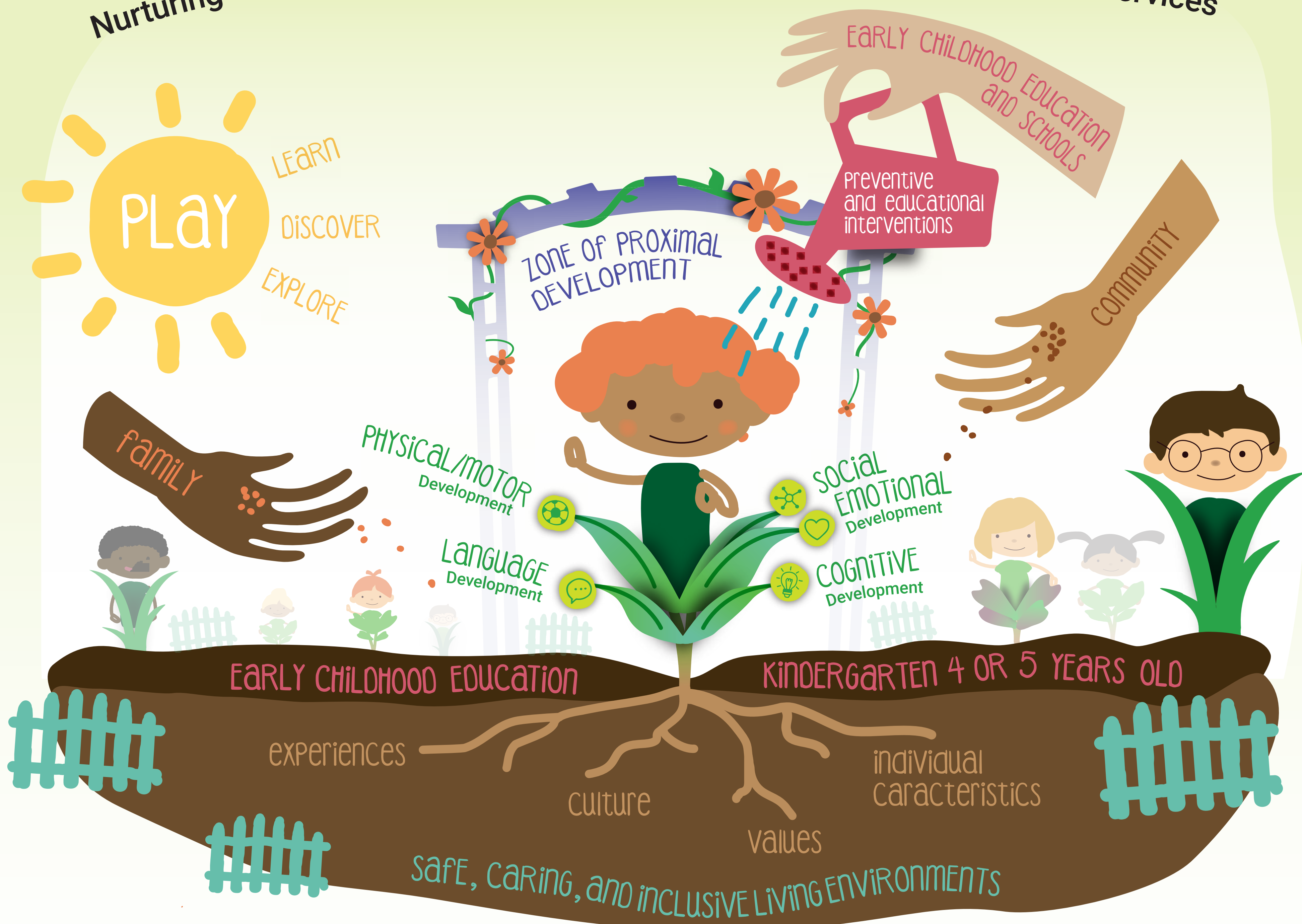


# all in THE SAME GARDEN

Nurturing and caring for childhood development across a continuum of services



**PLANTS CHILDREN**

The child is the main actor in their overall development. They learn at their own rhythm and according to their personal characteristics.

**ROOTS AND TRUNK**  
EXPERIENCES, CULTURE, VALUES, CHARACTERISTICS

The values, experiences, culture, and individual characteristics unique to the child influence their development.

**LEAVES OF THE PLANT**  
DEVELOPMENTAL DOMAINS

These domains are under constant development and mutually influence each other.

**ARBOUR**  
PROXIMALE DEVELOPMENTAL ZONE

The zone between what the child is able to do on their own and what they can do with the help of an adult or peer. This zone allows the child to develop their potential.

**SUN**  
DEVELOPMENT BY PLAY

Play is the perfect way for a child to learn, to discover, and to explore. It lets a child develop their full potential.

**HANDS**  
FAMILY, EARLY CHILDHOOD EDUCATION AND SCHOOL STAFF, COMMUNITY MEMBERS

The hands represent the help offered to a child in support of their overall development.

**WATERING CAN**  
THE QUALITY OF PREVENTIVE AND EDUCATIONAL INTERVENTIONS

Quality support is essential to the child's overall development.



Produced by the working committees *Accueillir la petite enfance* and *Programme-cycle de l'éducation préscolaire* as part of the work by the Regional Intersectoral Committee for First School Transition. R3USSIR. 2022.

**References**  
Gouvernement du Québec (2019). *Accueillir la petite enfance, le programme éducatif des services de garde du Québec*. Québec: Publications du Québec  
Gouvernement du Québec (2021). *Programme de formation de l'école québécoise, éducation préscolaire, Programme cycle de l'éducation préscolaire*. Québec: Publications du Québec.

A initiative of:



With the financial participation of:

